



vestis



 **mazzonetto**



vestis

INDEX

- 03 COMPANY PROFILE
- 05 ADVANTAGES
- 06 COLOURS AND FINISHINGS ASSORTMENT
- 08 VESTIS ROLLED PRODUCTS
- 09 ROOFING ACCESSORIES
- 10 RAINWATER SYSTEM
- 13 TECHNICAL CHARACTERISTICS



vestis



COMPANY PROFILE

Mazzonetto spa was founded in 1982 by the Mazzonetto family, in Veneto area which lies in the North of Italy, close to Venice. Ever since its inception, the company has distinguished itself for its manufacturing efficiency and innovative core focusing on roofing field.

Since the company was established 30 years ago, it has set the bar high for other manufacturers in its same sector, becoming a consolidated group with branches in Europe and a constantly expanding international presence.

Since the '90s it has extended its product assortment to metal cladding for building roofs and façades and has created a series of exclusive finishes and special claddings specifically designed for architecture and construction industry. Its high level of specialization in metalworking and its unwavering attention to market developments are the two main factors which have driven its growth process.

 ROMANIA
RAL 9010



vestis

 Grigno (TN) - ITALY
DOLOMITES GREY





vestis

ADVANTAGES

1 – LIGHTWEIGHT

Aluminium roof weight is around 2 kg/m². This is 1/10 of a traditional tile roof and less than half of a copper, titanium zinc and prepainted steel roof. Lightness is an advantage for the installer while working on the roof and with rainwatersystem too. In renovating old houses it is not necessary to reinforce the old roof understructure saving money and time.

2 – MALLEABLE & EASY TO WORK WITH

Aluminium alloy is very flexible and ductile. VESTIS H41 hardness is the ideal metal to be used in double standing seam installations. Moreover it can be worked without breakage at low temperature, even under 0 °C.

3 – LONG TIME RESISTANT:

RUSTPROOF: aluminium protect itselfs from rust with a self-protective layer.
SEVERE ATMOSPHERICAL CONDITIONS RESISTANT: with 35 microns of high durability polyester coating on the front face, the material is very well protected by storms, snow and strong UV rays too. Indeed Vestis is warrantied even if installed over 900 m of altitude.
25 microns of high durability polyester on the back face ensure gutters longer life while roof and facade are protected from the contact with other materials.

4 – DESIGN & CREATIVITY

Aluminium ductility gives the opportunity to create any shape without limitation to the architectural creativity. Available in 15 colors and 2 different surfaces, it can be combined with traditional and modern buildings, according to everyone's preferences.

5 – COMPLETE LINE

VESTIS is presented with a complete line of roofing accessories and rainwater-system.

6 – ECOLOGICAL & RECYCLABLE

Aluminium is 100% recyclable and atoxic.

7 – WARRANTY

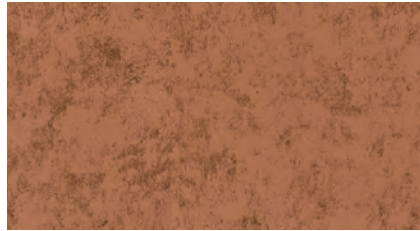
VESTIS is 40 years anti-corrosion and color warrantied for a long-lasting life. Warranty is automatic and it covers both coils and rainwater-system.



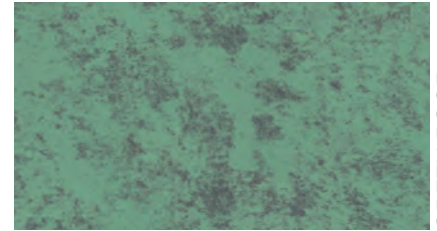
vestis

COLOURS AND FINISHINGS

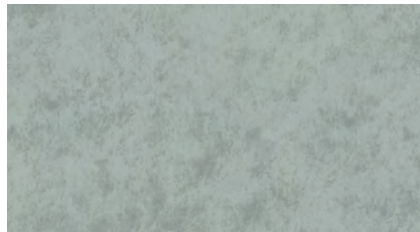
K2
ROOF
SURFACES



COPPER ROOF

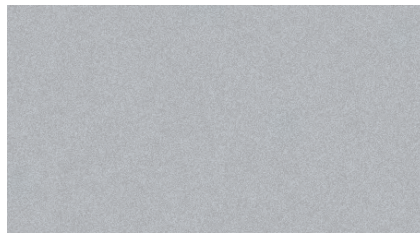


GREEN ROOF



GREY ROOF

K2
SMOOTH
SURFACES



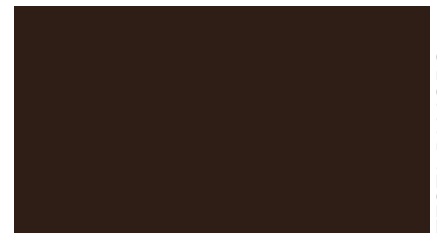
RAL 9006



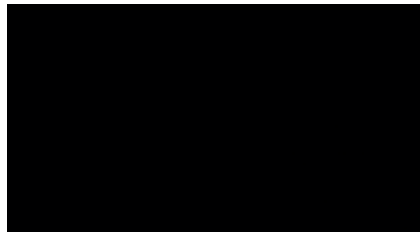
RAL 7016



RAL 7037



TESTA DI MORO



RAL 9005



RAL 9010

All colours and finishings are available
with stucco surface also.

ROOF and metallic colors may show slight differences
in color tone between different production lots.



vestis

COLOURS AND FINISHINGS

K2
MATT
SURFACES



GRAPHITE BLACK



QUARTZ GREY

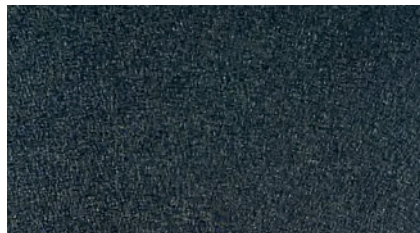


AGATE GREY



SLATE GREY

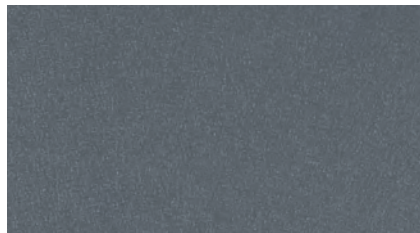
3D
TEXTURED
SURFACES



RAL 7016



DOLOMITES GREY



RAL 7037



TESTA DI MORO



CORTEX



VESTIS ROLLED PRODUCTS

vestis

VESTIS H41 - MATERIAL FOR STANDING SEAM INSTALLATION			COPPER ROOF	GREEN ROOF	GREY ROOF	CORTEX	RAL 7016	RAL 7037	RAL 9005	RAL 9006	RAL 9010	TESTA DI MORO	GRAPHITE BLACK	DOLOMITES GREY	QUARTZ GREY	AGATE GREY	SLATE GREY	
K2 SURFACES	Physical state	H41	[Color swatches]	[Color swatches]	[Color swatches]	[Color swatches]	[Color swatches]	[Color swatches]	[Color swatches]	[Color swatches]	[Color swatches]	[Color swatches]	[Color swatches]	[Color swatches]	[Color swatches]	[Color swatches]	[Color swatches]	[Color swatches]
	Front side	35 µm K2 surfaces																
	Back side	25 µm superpolyester brown color																
	Standard widths	500 / 650 / 1000 / 1300 mm - width 600 mm is available on request																
	Thickness	0,70 mm																
3D SURFACES	Physical state	H41	[Color swatches]	[Color swatches]	[Color swatches]	[Color swatches]	[Color swatches]	[Color swatches]	[Color swatches]	[Color swatches]	[Color swatches]	[Color swatches]	[Color swatches]	[Color swatches]	[Color swatches]	[Color swatches]	[Color swatches]	[Color swatches]
	Front side	35 µm 3D surfaces																
	Back side	25 µm superpolyester brown color																
	Standard widths	500 / 650 / 1000 / 1300 mm - width 600 mm is available on request																
	Thickness	0,70 mm																






ALL COLORS ARE AVAILABLE WITH EMBOSSED SURFACE




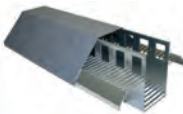
VESTIS H44 - MATERIAL FOR PROFILE PRODUCTION AND FACADE CLADDING			COPPER ROOF	GREEN ROOF	GREY ROOF	CORTEX	RAL 7016	RAL 7037	RAL 9005	RAL 9006	RAL 9010	TESTA DI MORO	GRAPHITE BLACK	DOLOMITES GREY	QUARTZ GREY	AGATE GREY	SLATE GREY	
K2 SURFACES	Physical state	H44	[Color swatches]	[Color swatches]	[Color swatches]	[Color swatches]	[Color swatches]	[Color swatches]	[Color swatches]	[Color swatches]	[Color swatches]	[Color swatches]	[Color swatches]	[Color swatches]	[Color swatches]	[Color swatches]	[Color swatches]	[Color swatches]
	Front side	35 µm K2 surfaces																
	Back side	25 µm superpolyester - paint color																
	Standard widths	250 / 333 / 500 / 1000 mm - other widths available on request																
	Thickness	0,80 mm 1,00 mm																
3D SURFACES	Physical state	H44	[Color swatches]	[Color swatches]	[Color swatches]	[Color swatches]	[Color swatches]	[Color swatches]	[Color swatches]	[Color swatches]	[Color swatches]	[Color swatches]	[Color swatches]	[Color swatches]	[Color swatches]	[Color swatches]	[Color swatches]	[Color swatches]
	Front side	35 µm 3D surfaces																
	Back side	25 µm superpolyester - paint color																
	Standard widths	250 / 333 / 500 / 1000 mm - other widths available on request																
	Thickness	0,80 mm 1,00 mm																



vestis

ROOFING ACCESSORIES

ROOFING ACCESSORIES			NATURAL ALUMINIUM	COPPER ROOF	GREEN ROOF	RAL 7016	RAL 7037	RAL 9006	TESTA DI MORO
	MOUNTING CLAMPS	Ø 28 mm							
	MOUNTING CLAMPS 2 HOLES	Ø 28 mm							
	SNOWGUARD PIPES	Ø 28 mm X 3 m							
	JOINTS FOR SNOWGUARD PIPES	Ø 22 mm FOR PIPES Ø 28 mm							
	ICEBREAKER	Ø 28 mm							

	FIXED CLIPS	H25 mm	STAINLESS STEEL
		H32 mm	STAINLESS STEEL
	SLIDING CLIPS	H25 mm	STAINLESS STEEL
		H32 mm	STAINLESS STEEL
	TRIDIMENSIONAL MESH	1,25 X 28 m ROLLS 35 m ²	450 g/m ² NOT RECYCLED POLYPROPYLENE
	TRIDIMENSIONAL MESH WITH BREATHABLE MEMBRANE	1,35 X 28 m ROLLS 37,80 m ²	450 g/m ² - NOT RECYCLED POLYPROPYLENE - BREATHABLE MEMBRANE 160 g/m ²
	VENTILATED RIDGE	2 m X 125 mm	GALVANIZED STEEL













RETOUCHING PAINT 10 ml EACH	COPPER ROOF	GREEN ROOF	GREY ROOF	RAL 7016	RAL 7037	DOLOMITES GREY	TESTA DI MORO
--------------------------------	-------------	------------	-----------	----------	----------	----------------	---------------

SILICON 310 ml EACH	GREY simil 7037	SAND GREY simil 9002	COPPER	TESTA DI MORO simil 8019	UNIVERSAL TRANSPARENT
------------------------	--------------------	-------------------------	--------	-----------------------------	--------------------------



vestis












RAINWATER SYSTEM

RAINWATER SYSTEM LINE			TESTA DI MORO K2	RAL 7016 K2	RAL 7037 K2	RAL 9005	RAL 9006	RAL 9010	COPPER ROOF	GREEN ROOF
	PERFORATED STRIPS	H 1000 mm								
	GUTTERS	250 mm X 3 m				-	-	-	-	-
		280 mm X 3 m								
		333 mm X 3 m								
		400 mm X 3 m								
	GUTTER CONNECTORS	250 mm				-	-	-	-	-
		280 mm								
		333 mm								
		400 mm								
	GUTTER EXPANSION JOINTS	250 mm				-	-	-	-	-
		280 mm								
		333 mm								
		400 mm								
	INNER/OUTER CORNERS	250 mm				-	-	-	-	-
		280 mm								
		333 mm								
		400 mm								
	UNIVERSAL ENDCAPS	250 mm				-	-	-	-	-
		280 mm								
		333 mm								
		400 mm								
	ENDCAPS WITH RUBBER	250 mm				-	-	-	-	-
		280 mm								
		333 mm								
		400 mm								
	GUTTER OUTLETS	250/80 mm				-	-	-	-	-
		280/80 mm								
		280/100 mm								
		333/80 mm								
		333/100 mm								
		400/120 mm								
	CUP OUTLETS	Ø 80 mm								
		Ø 100 mm								
		Ø 120 mm								
	TUBES	Ø 80 X 2/3 m								
		Ø 100 X 2/3 m								
		Ø 120 X 2/3 m								
	HOPPERS	Ø 80 mm								
		Ø 120 mm								
		Ø 100 mm								
	PIPE BRACKETS	Ø 80 mm								
		Ø 100 mm								
		Ø 120 mm								



vestis

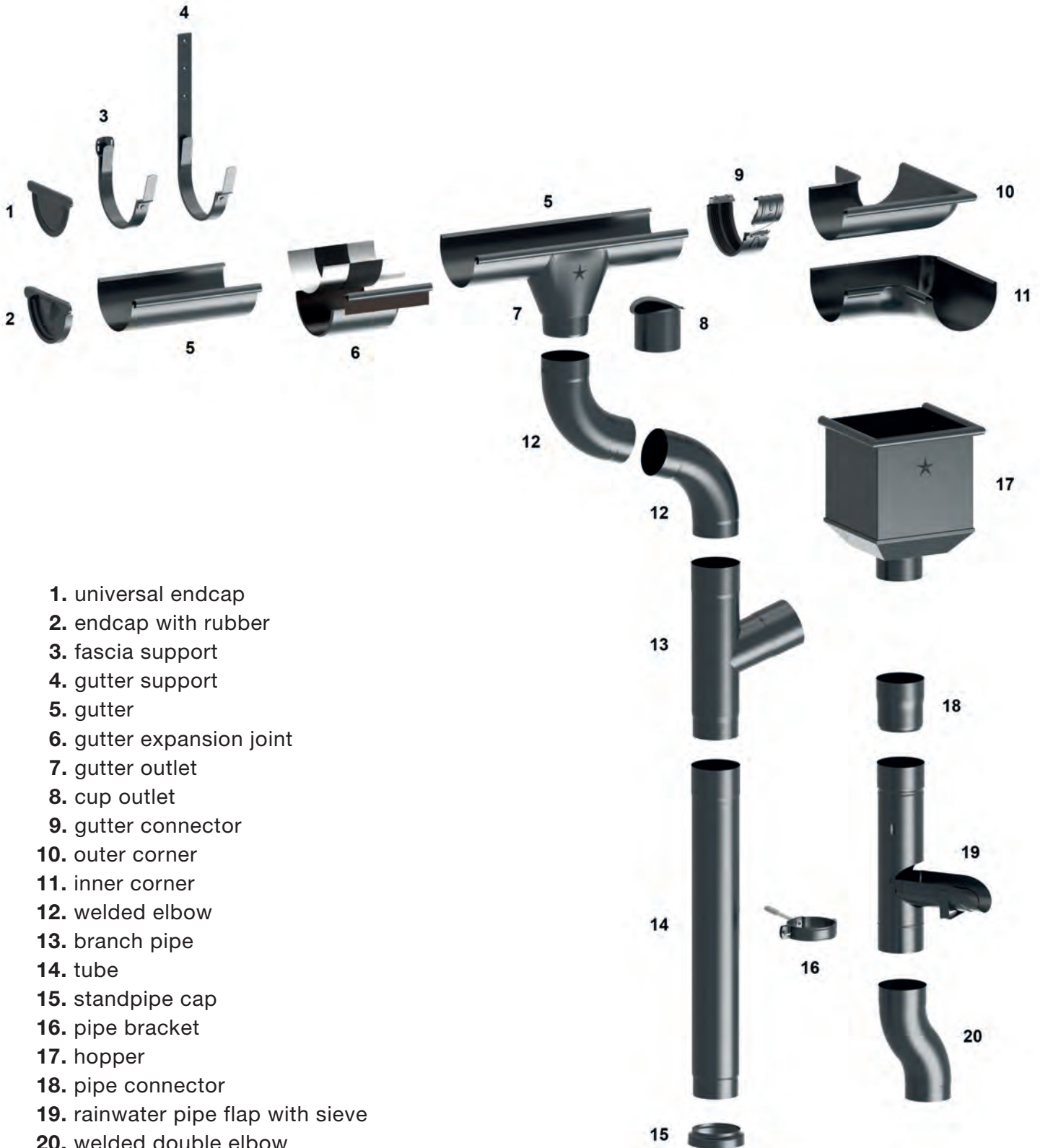
RAINWATER SYSTEM

RAINWATER SYSTEM LINE			TESTA DI MORO K2	RAL 7016 K2	RAL 7037 K2	RAL 9005	RAL 9006	RAL 9010	COPPER ROOF	GREEN ROOF
	STANDPIPE CAPS	Ø 80/115 mm	■	■	■	■	■	■	-	-
		Ø 100/115 mm	■	■	■	■	■	■	■	■
		Ø 120/150 mm	■	■	■	-	-	-	-	-
	WELDED ELBOWS	Ø 80/40°	■	■	■	-	-	-	-	-
		Ø 80/72°	■	■	■	■	■	■	-	-
		Ø 80/85°	■	■	■	■	■	■	-	-
		Ø 100/40°	■	■	■	-	-	-	-	-
		Ø 100/72°	■	■	■	■	■	■	■	■
		Ø 100/85°	■	■	■	■	■	■	■	■
		Ø 120/72°	■	■	■	-	-	-	-	-
	WELDED DOUBLE ELBOWS	Ø 80 mm	■	■	■	■	■	■	-	-
		Ø 100 mm	■	■	■	■	■	■	■	■
	RAINWATER PIPE FLAPS WITH SIEVE	Ø 80 mm	■	■	■	-	-	-	-	-
		Ø 100 mm	■	■	■	-	-	-	-	-
		Ø 120 mm	■	■	■	-	-	-	-	-
	BRANCH PIPES	Ø 80/80 mm	■	■	■	■	■	■	-	-
		Ø 100/100 mm	■	■	■	■	■	■	■	■
		Ø 100/80 mm	■	■	■	-	-	-	-	-
		Ø 120/120 mm	■	■	■	-	-	-	-	-
	PIPE CONNECTORS	Ø 80 mm	■	■	■	■	■	■	-	-
		Ø 100 mm	■	■	■	■	■	■	■	■
		Ø 120 mm	■	■	■	-	-	-	-	-
	GUTTER SUPPORTS	250 mm	■	■	■	-	-	-	-	-
		280 mm	■	■	■	■	■	■	-	-
		333 mm	■	■	■	■	■	■	■	■
		400 mm	■	■	■	-	-	-	-	-
	GUTTER SUPPORTS SHORT VERSION	280 mm	■	■	■	-	-	-	-	-
		333 mm	■	■	■	-	-	-	-	-
	FASCIA SUPPORT	280 mm	■	■	■	-	-	-	-	-
		333 mm	■	■	■	-	-	-	-	-
	SCREW CAPS	Ø 30 mm	■	■	■	■	■	■	■	■
	STAINLESS STEEL RIVETS	4 X 9 mm	■	■	■	■	■	■	■	■



RAINWATER SYSTEM

vestis





vestis

TECHNICAL CHARACTERISTICS

COATING FINISH	EXTERNAL ENVIRONMENTAL CONDITIONS						
	RURAL	URBAN/ INDUSTRIAL (moderate pollution)	INDUSTRIAL (severe pollution)	MARINE (>3 km)	MARINE (3 km > 1 km)	MARINE (<1 km)	STRONG UV RAYS (over 900 m altitude)
VESTIS	40 Year Warranty	40 Year Warranty	20 Year Warranty	40 Year Warranty	20 Year Warranty	NO Warranty	40 Year Warranty

BASE METAL - VESTIS LINE FOR PROFILES AND FACADE CLADDING	H44
BASE METAL - VESTIS FOR ROOFING STANDING SEAM	H41
SURFACE A	35 µm K2 SURFACE OR 3D SURFACE
FACE B	25 µm SUPERPOLYESTER
SURFACE PENCIL HARDNESS	H
CRACK FORMATION DURING BENDING	≤ 1,5T free of cracks
ADHESION AFTER BENDING	≤ 1T peel adhesion
SALT SPRAY TEST	1500 h
UV RESISTANCE	RUV 4
WARRANTY	TILL 40 YEARS



Lubljana - SLOVENIA
COPPER ROOF



vestis



Asiago (VI) - ITALY
GREEN ROOF - COPPER ROOF





Melbourne - AUSTRALIA
GRAPHITE BLACK



vestis



Telford - GREAT BRITAIN
GREEN ROOF



Mazonetto SpA

Z.I. Via A. Ceccon, 10
35010 Loreggia (PD) - Italy

T +39 049.93.226.11

F +39 049.93.226.50

W mazonettometals.com



Mazonetto S.p.a. reserves the right to make changes on its products
anytime in order to better their quality without prior notice.